

## Exporting Data from NanoDrop One/One<sup>C</sup> to the Thermo Fisher Cloud

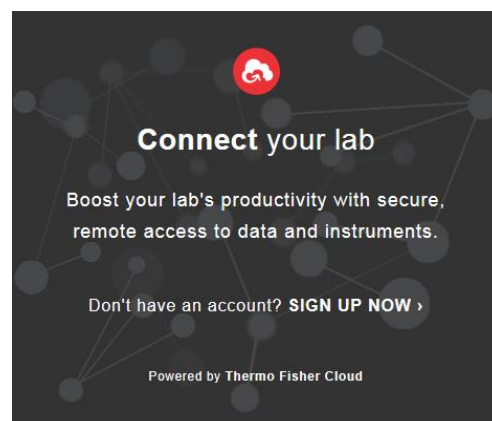
*For use with version 1.4 of local control software*

With the release of version 1.4 of software, Thermo Scientific™ NanoDrop™ One/OneC Microvolume UV-Vis Spectrophotometers can be connected to Thermo Fisher Connect's cloud-based platform, allowing data to be exported directly to Thermo Fisher Cloud for storage. Currently, all experiment types (e.g., dsDNA, Proteins & Labels, and OD600) can be exported to your private Thermo Fisher Cloud for storage. Double-stranded DNA, single-stranded DNA, and RNA data can be uploaded to your Thermo Fisher Cloud account and analyzed using the NanoDrop analysis application.


### Accessing Thermo Fisher Connect services and creating your Thermo Fisher Cloud account

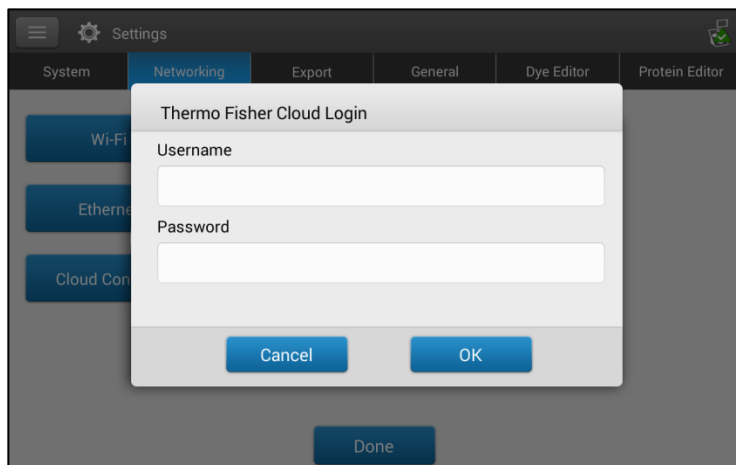
You must connect your NanoDrop One/One<sup>C</sup> spectrophotometer to Thermo Fisher Cloud to access Thermo Fisher Connect's cloud-based tools. Before exporting data from the NanoDrop One/One<sup>C</sup> instrument to the Thermo Fisher Cloud, you must create a Cloud account. The account is free and comes with 10 GB of storage. Additional storage is available for purchase. To create an account:

1. Navigate to the following URL:  
<https://www.thermofisher.com/us/en/home/cloud.html>
2. Click **SIGN UP NOW** and enter the information requested.
3. When finished, click the **Create Account** button.



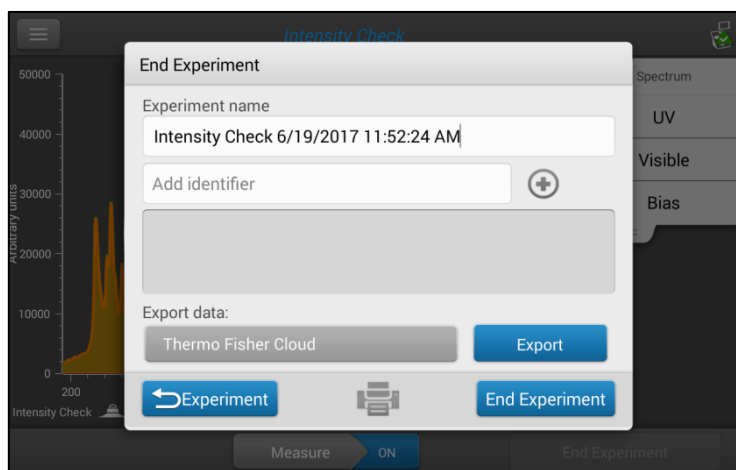
## Connecting a NanoDrop One/One<sup>C</sup> instrument to your Thermo Fisher Cloud account:

1. From the Home Screen, tap the **Settings** icon , followed by the **Networking** tab.
2. Ensure the instrument has an internet connection by connecting the instrument to a Wi-Fi or Ethernet network. Contact Technical Support ([nanodrop@thermofisher.com](mailto:nanodrop@thermofisher.com)) with any questions.
3. Tap the **Cloud Connect** button and enter the Username and Password that you created for your Thermo Fisher Cloud account. Tap **OK**.
4. A window will appear stating the instrument was successfully registered to you.




## Exporting data to the Thermo Fisher Cloud at the end of an experiment:

1. Once you have completed making sample measurements, tap the **End Experiment** button.
2. From the **End Experiment** window, select **Thermo Fisher Cloud** from the **Export data** dropdown and tap the **Export** button.

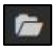


3. A dropdown list of Cloud accounts connected to this instrument will appear. Select your account and tap the **Export** button.
4. A window will appear indicating your export was successful.



## Exporting previously measured data to the Thermo Fisher Cloud:

1. From the Home Screen, tap the **Data Viewer** icon .
2. Set the Search filters to locate the Experiment(s) you wish to export.
3. Tap the **Select** button and tap the Experiment(s) you wish to export.
4. At the top right of the screen, tap the **Export** button.
5. Select **Thermo Fisher Cloud** from the **Export data** dropdown, and tap the **Export** button.
6. A dropdown list of Cloud accounts connected to this instrument will appear. Select your account and tap the **Export** button.
7. A window will appear indicating your export was successful.

## Viewing exported data in the Thermo Fisher Cloud:

1. Navigate to <https://www.thermofisher.com/us/en/home/cloud.html> and log into your account. Click on the **Files**  button from the left-hand side navigation bar.
2. Data exported from your instrument will appear in the **Personal Files** folder. Click on the **Personal Files** folder and locate the Experiment(s) you exported.
3. Double-click the Experiment to open it into the NanoDrop analysis application.
4. In the application you can view Blank and Sample measurements that were made. Any Thermo Scientific™ Acclaro™ Sample Intelligence technology information alerts and contamination analysis information will be viewable within the Experiment.

Disconnecting a NanoDrop One/One<sup>C</sup> instrument from your Thermo Fisher Cloud account:

1. Navigate to <https://www.thermofisher.com/us/en/home/cloud.html> and log into your account.  
Click on the **Instruments**  button from the left-hand side navigation bar.
2. Click on the **Instruments** tab and locate your NanoDrop One/One<sup>C</sup> serial number.
3. Select your instrument and click **Disconnect**  at the top right of the screen.
4. A window will appear asking if you are sure you wish to disconnect. Click **Confirm**.

## Further Assistance and Technical Support

For further assistance, contact NanoDrop technical support at [nanodrop@thermofisher.com](mailto:nanodrop@thermofisher.com) or visit [thermofisher.com/nanodrop](http://thermofisher.com/nanodrop).

Find out more at [thermofisher.com/nanodrop](http://thermofisher.com/nanodrop)

**ThermoFisher**  
S C I E N T I F I C

© 2017 Thermo Fisher Scientific Inc. All rights reserved. All trademarks are the property of Thermo Fisher Scientific and its subsidiaries unless otherwise specified.